



# July 2015 update

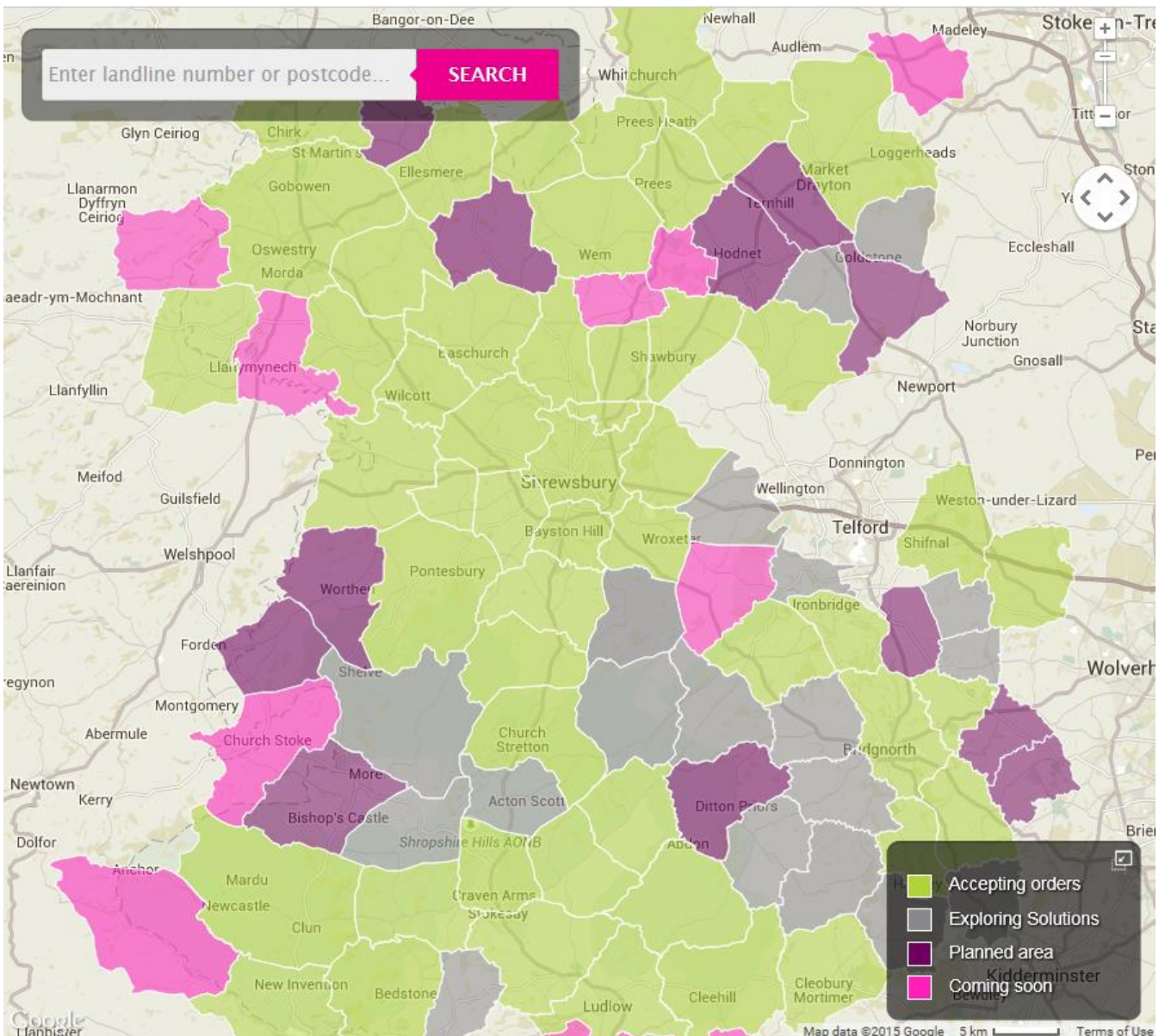
As of 2 July 2015...  
**36,761**  
homes and businesses  
have been fibre  
enabled thanks to  
Connecting Shropshire.

**Make the Switch!**  
To discover what fibre can do for you, you must opt-in by contacting your ISP

Our online map and checker makes it easier for you to find out about the availability of fibre broadband in your area, and at an individual premises level. See: <http://connectingshropshire.co.uk/when-and-where/>

## A roundup of what's been going on in the programme

48 exchange areas are now 'accepting orders' with one or more cabinets providing fibre broadband

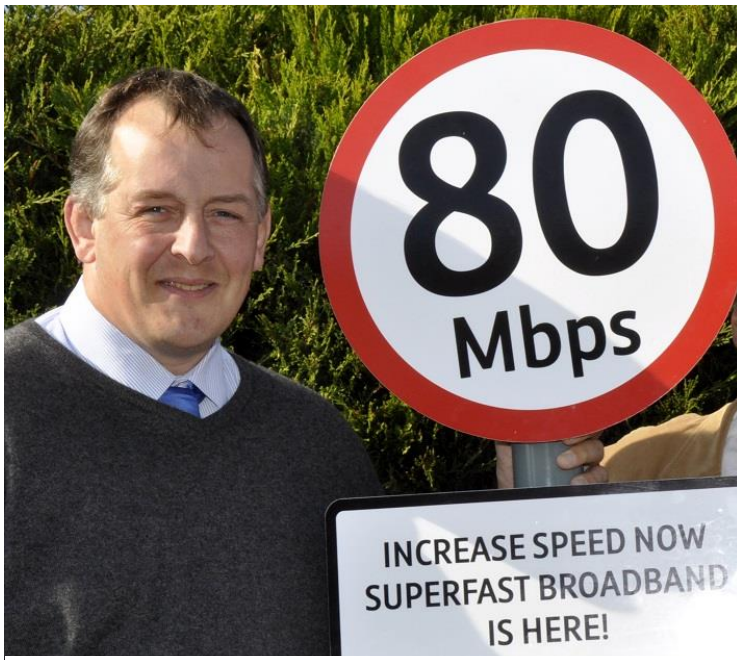


## Some premises in these 48 exchanges have access to fibre broadband from Connecting Shropshire:

- Albrighton
- Bayston Hill
- Bettisfield
- Bomere Heath
- Bridgnorth
- Bromfield
- Broseley
- Bucknell
- Calverhall
- Chirk
- Church Stretton
- Clee Hill
- Cleobury Mortimer
- Clun
- Craven Arms
- Cross Houses
- Dorrington
- Ellesmere
- Great Bolas
- Hadnall
- Halfway House
- Hanwood
- Harlescott
- Highley
- Knockin
- Leebotwood
- Little Brampton
- Ludlow
- Market Drayton
- Montford Bridge
- Much Wenlock
- Munslow
- Nesscliffe
- Oswestry
- Pontesbury
- Prees
- Quatt
- Queens Head
- Seifton
- Shawbury
- Shifnal
- Shrewsbury
- Stoke St Milborough
- Upton Magna
- Wem
- Whixall
- Worfield
- Yockleton

## Update on strategy for broadband in the Shropshire Council area

Steve Charmley, Deputy Leader & Member for Whittington Ward, has issued an open letter to provide an



Cllr. Steve Charmley in St. Martins where homes and businesses can now upgrade to superfast broadband

update on Connecting Shropshire's progress and aspirations for delivering better broadband to all the communities in the Shropshire Council area. In summary, the Connecting Shropshire programme remains in a very positive position with delivery on schedule. We have procured some additional coverage as part of Phase 2 and are now looking forwards to further coverage opportunities with the support of Broadband Delivery UK. We additionally have secured a connection voucher scheme that can assist local businesses to immediately take up superfast broadband.

For more information about Phase 2 and the connection voucher scheme, see the relevant articles below.

To read the letter in full, go to:

[http://connectingshropshire.co.uk/2015/06/open-](http://connectingshropshire.co.uk/2015/06/open-letter-%e2%80%93-strategy-for-broadband-in-shropshire/)

[letter-%e2%80%93-strategy-for-broadband-in-shropshire/](http://connectingshropshire.co.uk/2015/06/open-letter-%e2%80%93-strategy-for-broadband-in-shropshire/)

## Free workshop for businesses wanting to know more about the Connection Voucher Scheme

Shropshire Council, together with INCA (Independent Networks Co-operative Association), is hosting a free workshop on Wednesday 15 July 2015, offering a great opportunity to find out how to get financial support for better broadband. Attendees will find out how the Connection Voucher Scheme can benefit their business, and how the vouchers can be pooled to form a group scheme, providing a superfast broadband connection for groups of businesses in a locality.

To attend, please register on the INCA website by [clicking here](#) and scrolling down to the bottom of the page to find the 'register now' button.



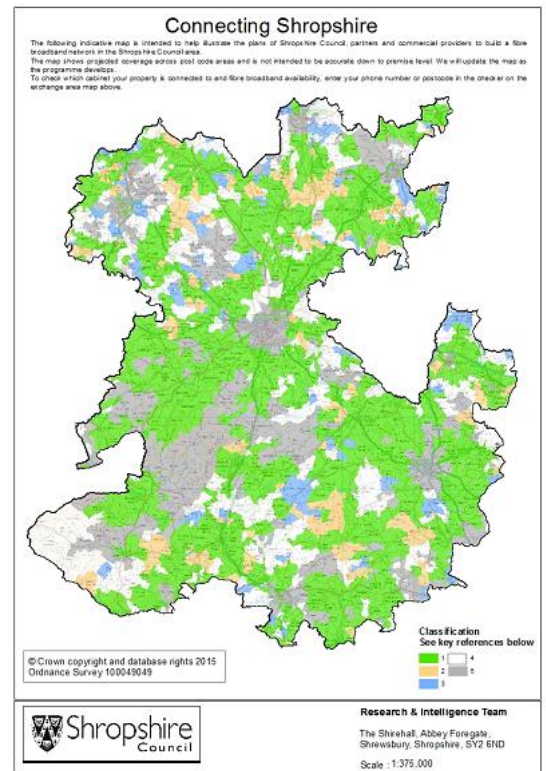
For any business that would like to find out more about the Connection Voucher Scheme, further information can be found at <http://connectingshropshire.co.uk/connection-voucher-scheme/>. The Scheme is administered by Digital Birmingham, who can be contacted via email on: [voucherapply@birmingham.gov.uk](mailto:voucherapply@birmingham.gov.uk)

## Phase 2 - projected deployment map

In the last update we provided information about the new £5.6m deal to make superfast fibre broadband available to around 4,000 more homes and businesses in the Shropshire Council area during 2017 and 2018. More details of the areas to benefit are now available on the bottom of the 'when and where' page of our website, see:

<http://connectingshropshire.co.uk/when-and-where/>

The indicative map is intended to help illustrate the plans of Shropshire Council, partners and commercial providers to build a fibre broadband network in the Shropshire Council area. It shows projected coverage across post code areas and is not intended to be accurate down to premise level.



## Fibre in Focus – Women and Broadband project







Clare Rowson  
**Clare Rowson Marketing**  
[clarerowson.co.uk](http://clarerowson.co.uk)  
Shropshire

Women in Rural Enterprise ([WiRE](http://www.wirechallenge.org/)) ran the hugely successful Women and Broadband project on behalf of Connecting Shropshire. The project ended in March, but we've applied for further funding from the Government Equalities Office and Broadband Delivery UK to enable WiRE to deliver additional workshops aimed at local business women.

More information about the project is available on the following website <http://www.wirechallenge.org/>, including 14 case studies from women who benefitted from the project.

Clare Rowson (pictured left) attended some of the Women and Broadband courses saying, "I certainly benefitted from the social media workshops but for me the most useful was the video course. I have already been able to put this into use and have made videos for my clients. But the [project] was also great for giving women the opportunity to come together and network – to meet others in similar situations."

## Contact Details

-  [www.connectingshropshire.co.uk](http://www.connectingshropshire.co.uk)
-  [connecting.shropshire@shropshire.gov.uk](mailto:connecting.shropshire@shropshire.gov.uk)
-  01743 252203
-  @ConnectingShrop